



# HANMIX

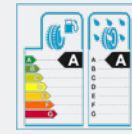
---

## FORKLIFT TIRE

Product parameter  
manual

Tel: +86 532 80905566  
Email: [info@hanmix.net](mailto:info@hanmix.net)  
Web: [www.hanmix.net](http://www.hanmix.net)





## WHY HANMIX?

HANMIX is an international brand with 40 years' experience in Tyre and Tyre Accessories business. HANMIX is not only a brand name, but a way for a better life. You can find security, safety and high quality life in the HANMIX World.



## HANMIX THE QUALITY

HANMIX is committed to conducting comprehensive assessments of product quality, price, ability to supply our clients locally and internationally. All HANMIX products comply with international quality standards and are respected throughout the world.

-----WWW.HANMIX.NET

### Quality Control:

HANMIX provides quality and quantity inspections, and offers a warranty for products purchased.



Inspected each tyre from production to the warehouse to the markets. Inspected each tyre by serial number, tread depth and weight. Inspected each tyre by international laboratory standards.





# FORKLIFT TIRE

 PNEUMATIC

 SOLID

 PRESS ON

 NON-MARKING



RF-111



RF-112



RF-222



RF-333



RF-444



RF-555



RF-666



RF-777



RF-TR-01



RF-SM-01



RF-222



RF-333



RF-444



RF-555



## PNEUMATIC

### RF-111

### Features

- ◆ Suits for balanced forklift and industrial vehicles.
- ◆ Deep tread pattern design provide excellent durability.
- ◆ Excellent traction performance with high load capacity.

SIZE	PR	STD RIM	MAX. LOAD (KG)	INFLATION PRESSURE	TIRE DIMENSION (MM)	
					SW	OD
5.00-8	10	3.50D	1295	900	137	470
6.00-9	10	4.00E	1795	850	160	540
6.50-10	10	5.00F	1965	775	175	590
7.00-9	10	5.00	1995	860	190	590
7.00-12	14	5.00S	2670	1000	192	683
7.00-15	14	5.50F	3100	945	200	750
7.50-15	14	6.00G	3375	925	215	808
8.25-12	12	7.00	3060	720	235	696
8.25-15	14	6.50	3830	830	236	847
9.00-20	18	7.00	2700	740	262	1022
10.00-20	18	7.50	3000	740	280	1060
12.00-20	20	8.50	3700	740	320	1130
250-15	16	7.50	4350	850	250	735
300-15	20	8.00	6825	900	300	840
18*7-8	14	4.33R	1840	900	173	465
21*8-9	14	6.00E	2300	900	200	535

SIZE	PR	STD RIM	MAX. LOAD (KG)	INFLATION PRESSURE	TIRE DIMENSION (MM)	
					SW	OD
23*9-10	16	7.00	2300	800	229	584
23*10-12	12	8.00	3290	700	200	632
27*10-12	14	8.00G	3620	750	250	690
28*9-15 (8.15-15)	14	7.00	3285	800	220	710







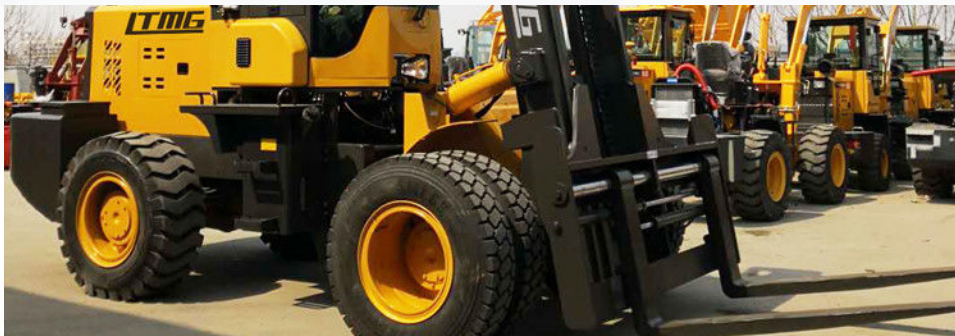
## PNEUMATIC

### RF-112

### Features

- ◆ Suitable to scrapers and forklifts operating in areas like port, air port, factory and warehouse sites etc.
- ◆ Wide and thick tread pattern provides good ground contact and traction.
- ◆ Good cutting and wear resistances, self-cleaning, long service life.

SIZE	PR	STD RIM	MAX. LOAD (KG)	INFLATION PRESSURE	TIRE DIMENSION (MM)	
					SW	OD
10.00-20	16	7.50	8320	830	278	1055
12.00-20	20	8.50	10640	900	315	1125



## SOLID

### RF-222

### Features

- ◆ Suitable for lifter or forklift in tough working conditions.
- ◆ Super strong pneumatic shaped solid tyre with special compounds.

SIZE	RIM	HEEL		OD (mm)	SW (mm)	PATTERN DEPTH (mm)	LOAD CAPACITY(kg)		NON-MARKING
		Normal	Quick				BALANCE FORKLIFT		
							Up to 25 km/h		
		Drive	Steer						
16X6-8	4.33	√	√	399	147		1345	1010	NM
18X7-8	4.33	√	√	443	157	32	2110	1585	NM
200X50-10	6.50	√	√	447	198	27	2135	1605	NM
21X8-9	6.00	√		507	184	40	2530	1895	NM
23X9-10	6.50	√	√	575	193	50	3605	2705	NM
23X10-12	8.00	√	√	585	229		3586	3010	NM
2.50-15	7.50	√	√	680	230	35	3930	2955	NM
28X9-15	7.00	√	√	710	209	40	3675	2755	NM
3.00-15	8.00	√	√	780	241	51	5380	4037	NM
4.00-8	3.00	√		404	113	20	950	715	
5.00-8	3.00	√	√	458	127	34	1095	820	NM
6.00-9	4.00	√	√	521	145	39	1730	1295	NM
6.50-10	5.00	√	√	565	155	42	2370	1780	NM
6.50-16	5.50	√		748	165		3080	2310	
7.00-9	5.00	√		550	159	41	2370	1750	
7.00-12	5.00	√	√	655	161	42	2710	2035	NM

SIZE	RIM	HEEL		OD (mm)	SW (mm)	PATTERN DEPTH (mm)	LOAD CAPACITY(kg)		NON- MARKING
		Normal	Quick				BALANCE FORKLIFT		
							Up to 25 km/h		
Drive	Steer								
7.00-15	5.50,6.00	√		740	180	40	3225	2420	
7.50-15	5.50,6.00,6.50	√		740	180	40	3190	2395	
7.50-16	5.50,6.00,6.50	√		785	189	39	3520	2640	
8.25-12	6.50	√		695	192	50	2995	2245	
8.25-15	6.50	√	√	805	207	43	4440	3330	NM
8.25-20	6.50,7.00	√		925	212	52	4880	3735	
9.00-16	6.50	√		845	219	49	4625	3470	
9.00-20	6.50,7.00	√		935	222	54	5805	4355	
10.00-20	7.50,8.00	√		1003	266	70	6610	4885	
11.00-20	8.00	√		1003	266		6810	5120	
12.00-16	8.00	√		850	255	73			
12.00-20	8.00,8.50	√		1008	283	51	8000	6450	
12.00-24	8.50	√		1140	300	91			
14.00-24	10.00	√		1268	300	91			



## SOLID

## RF-333

### Features

- ◆ High load, wide grounding area, strong seizing force.
- ◆ Low rolling resistance, low energy consumption.



SIZE	RIM	HEEL		OD (mm)	SW (mm)	LOAD CAPACITY(kg)		NON- MARKING
		Normal	Quick			BALANCE FORKLIFT		
						Up to 25 km/h		
Drive	Steer							
6.00-9	4.00	√	√	545	148	1730	1295	NM
6.50-10	5.00	√	√	597	158	2370	1780	NM
7.00-12	5.00	√	√	683	167	2710	2035	NM
28×9-15(8.15-15)	7.00	√	√	706	230	3675	2755	NM
8.00-16	6.00	√		819	181	3520	2640	NM



## SOLID

### RF-444

#### Features

- ◆ Strong wear-resistant capability.
- ◆ Strong seizing force, low rolling resistance, low energy consumption.
- ◆ Suitable for logistics, port, large factory assemble line with day and night working condition and so on.

SIZE	RIM	HEEL		OD (mm)	SW (mm)	LOAD CAPACITY(kg)		NON-MARKING
		Normal	Quick			BALANCE FORKLIFT		
						Up to 25 km/h		
						Drive	Steer	
3.50-5	3.00	√		287	88	330	280	NM
5.00-8	3.00,3.50	√	√	455	117	1080	890	NM
15×4½-8	3.00,3.33	√	√	371	108	805	605	NM
16×6-8	4.33	√	√	399	147	1345	1010	NM
18×7-8	4.33	√	√	443	157	2110	1585	
6.00-9	4.00	√	√	545	148	1730	1295	NM
21×8-9	6.00	√	√	507	184	2530	1895	NM
6.50-10	5.00	√	√	597	158	2370	1780	NM
23×9-10	6.50	√	√	575	193	3605	2705	NM
200/50-10	6.50	√	√	458	198	2135	1605	NM
7.00-12	5.00	√	√	683	167	2710	2035	NM
23×10-12	8.00	√	√	585	229	3586	3010	NM
27×10-12	8.00	√	√	665	235	4020	3015	NM
28×9-15(8.15-15)	7.00	√	√	710	209	3675	2755	



## SOLID

### RF-555

#### Features

- ◆ Higher loading, less rolling resistance, lower energy consumption.
- ◆ Higher wear and anti-puncture resistance, no exploding.
- ◆ Suitable for large engineering vehicles, special martial vehicles, material mixing machineries in metallurgy industry.

SIZE	RIM	HEEL		OD (mm)	SW (mm)	PATTERN DEPTH (mm)	LOAD CAPACITY(kg)		NON-MARKING
		Normal	Quick				BALANCE FORKLIFT		
							Up to 25 km/h		
							Drive	Steer	
15×4½-8	3.00	√	√	371	108	23	805	605	NM
18×7-8	4.33	√	√	443	157	32	2110	1585	NM
28×9-15(8.15-15)	7.00	√	√	710	209	40	3675	2755	NM
5.00-8	3.00	√	√	458	127	34	1095	820	NM
6.00-9	4.00	√	√	521	145	39	1730	1295	NM
6.50-10	5.00	√	√	565	155	42	2370	1780	NM
7.00-9	5.00	√		550	159	41	2370	1750	
7.00-12	5.00	√	√	655	161	42	2710	2035	NM
8.25-12	6.50	√		695	192	50	2995	2245	
8.25-15	6.50	√	√	805	207	43	4440	3330	NM





## SOLID

### RF-666

### Features

- ◆ Strong wear-resistant capability.
- ◆ Unique pattern design prevents shock transfer to fragile or impact-sensitive loads. Provides operators with a more comfortable ride on uneven surfaces.

SIZE	RIM	HEEL		OD (mm)	SW (mm)	MAX LOAD (kg)	
		Normal	Quick			BALANCE FORKLIFT	
						10KM/H	
LOAD	ROTATION						
15×4.5-8	3.00	√	√	378	106	930	750
140/55-9	4.00	√	√	385	136	1170	900
16×6-8	4.33	√	√	406	148	1500	1200
500-8	3.00	√	√	460	119	1210	970
18×7-8	4.33	√	√	455	170	2350	1880
200/50-10	6.50	√	√	454	195	2470	1850
600-9	4.00	√	√	524	150	1920	1535
21×8-9	6.00	√	√	506	185	2810	2250
650-10	5.00	√	√	576	159	2640	2110
700-12	5.00	√	√	650	156	2410	2910
700-15	6.00	√	√	720	200	3590	2872
23×9-10	6.50	√	√	858	209	3420	2735
23×10-12	8.00	√	√	592	230	3770	2900
28×9-15	7.00	√	√	693	219	4090	3270
8.25-15	6.50	√	√	795	191	4940	3950

SIZE	RIM	HEEL		OD (mm)	SW (mm)	MAX LOAD (kg)	
		Normal	Quick			BALANCE FORKLIFT	
						10KM/H	
LOAD	ROTATION						
8.25-15	6.50	√	√	795	191	4940	3950
7.50-16	6.00	√	√	815	220	3910	3130
350-15	9.75	√	√	823	301	5990	4790
14.00-24	10.00	√	√	1368	335	11865	9490







## SOLID

**RF-777**

### Features

- ◆ Deep tread pattern, high load, large ground contact acreage.
- ◆ Strong traction, excellent wear-resistance.
- ◆ Low heat generating, outstanding performance.
- ◆ Low rolling resistance, low heat generation.

SIZE	RIM	WEIGHT (kg)	OD (mm)	SW (mm)	LOAD CAPACITY (kg)				
					BALANCE FORKLIFT				OTHER FORKLIFT 16km/h
					10km/h		25km/h		
					Drive	Steer	Drive	Steer	
600-9	4.00	26	515	135	1885	1450	1885	1710	1710
650-10	5.00	34.5	575	150	2640	2100	2370	1780	1820
700-12	5.00	46	658	165	2920	2240	2240	2645	2645
28×9-15	7.00	60	695	200	4090	3280	3675	2755	2820



## PRESS ON

**RF-TR-01**

### Features

- ◆ Lower energy consumption, low heat build up, long tread life.
- ◆ Longer lasting standard compound offers increased vehicle productivity.
- ◆ Suitable for lift truck, tow trucks and other machineries running and driving slowly.

SIZE (INCH)	SIZE (mm)	LOAD CAPACITY (KG)				
		BALANCE FORKLIFT				OTHER FORKLIFT 16km/h
		10km/h		16km/h		
		Drive	Steer	Drive	Steer	
14×4 1/2×8	355.6×114.3×203.2	1090	970	1040	960	840
15 1/2×5×10	393.7×127×254	1360	1210	1300	1200	1050
16×5×10 1/2	406.4×127×266.7	1400	1250	1340	1240	1080
16×6×10 1/2	406.4×152.4×266.7	1780	1580	1700	1570	1370
16 1/4×5×11 1/4	412.8×127×285.8	1415	1260	1390	1290	1110
16 1/4×6×11 1/4	412.8×152.4×285.8	1800	1630	1750	1620	1420
18×5×12 1/8	457.2×127×308	1530	1360	1460	1350	1170
18×6×12 1/8	457.2×152.4×308	1950	1740	1860	1720	1500
18×7×12 1/8	457.2×177.8×308	2370	2110	2270	2100	1820
18×9×12 1/8	457.2×228.6×308	3210	2850	3070	2840	2470
20×8×16	508×203.2×406.4	2790	2480	2670	2470	2150
21×7×15	533.4×177.8×381	2670	2380	2550	2360	2050
21×8×15	533.4×203.2×381	3140	2795	3000	2780	2420
22×8×16	558.8×203.2×406.4	3260	2900	3110	2880	2505
22×9×16	558.8×228.6×406.4	3700	3340	3590	3320	2890



## PRESS ON

### RF-SM-01

### Features

- ◆ Lower energy consumption, low heat build up, long tread life.
- ◆ Longer lasting standard compound offers increased vehicle productivity.
- ◆ Suitable for lift truck, tow trucks and other machineries running and driving slowly.

SIZE (INCH)	SIZE (mm)	LOAD CAPACITY (KG)				
		BALANCE FORKLIFT				OTHER FORKLIFT
		10km/h		16km/h		
		Drive	Steer	Drive	Steer	16km/h
9×5×5	228.6×127×127	890	790	850	785	680
10×4×6 1/2	254×101.6×165.1	720	640	690	635	555
10×5×6 1/2	254×127×165.1	940	840	900	830	725
10×6×6 1/2	254×152.4×165.1	1160	1030	1110	1000	895
10×5×6 1/4	254×127×158.8	950	850	910	840	735
10×6×6 1/4	254×152.4×158.8	1170	1050	1120	1020	910
10 1/2×5×5	266.7×127×127	1020	905	980	905	785
10 1/2×6×5	266.7×152.4×127	1295	1150	1240	1145	1000
10 1/2×5×6 1/2	266.7×127×165.1	1000	890	950	880	770
10 1/2×6×6 1/2	266.7×152.4×165.1	1240	1100	1185	1090	950
12×4 1/2×8	304.8×114.3×203.2	950	840	900	830	730
12×5×8	304.8×127×203.2	1030	915	980	910	800
13 1/2×5 1/2×8	342.9×139.7×203.2	1400	1250	1340	1240	1080
14×4 1/2×8	355.6×114.3×203.2	1090	970	1040	960	840
15×5×11 1/4	381×127×285.8	1290	1150	1230	1140	990

SIZE (INCH)	SIZE (mm)	LOAD CAPACITY (KG)				
		BALANCE FORKLIFT				OTHER FORKLIFT
		10km/h		16km/h		
		Drive	Steer	Drive	Steer	16km/h
15×6×11 1/4	381×152.4×285.8	1420	1270	1360	1250	1100
15 1/2×5×10	393.7×127×254	1360	1210	1300	1200	1050
15 1/2×6×10	393.7×152.4×254	1730	1540	1655	1530	1330
16×5×10 1/2	406.4×127×266.7	1400	1250	1340	1240	1080
16×6×10 1/2	406.4×152.4×266.7	1780	1580	1700	1570	1370
16×7×10 1/2	406.4×177.8×266.7	2150	1910	2050	1900	1655
16 1/4×5×11 1/4	412.8×127×285.8	1415	1260	1390	1290	1110
16 1/4×6×11 1/4	412.8×152.4×285.8	1800	1630	1750	1620	1420
16 1/4×7×11 1/4	412.8×177.8×285.8	2200	1960	2100	1950	1705
17×5×12 1/8	431.8×127×308	1460	1300	1400	1290	1120
18×5×12 1/8	457.2×127×308	1530	1360	1460	1350	1170
18×6×12 1/8	457.2×152.4×308	1950	1740	1860	1720	1500
18×7×12 1/8	457.2×177.8×308	2370	2110	2270	2100	1820
18×8×12 1/8	457.2×203.2×308	2790	2480	2670	2470	2150
18×9×12 1/8	457.2×228.6×308	3210	2850	3070	2840	2470
20×8×16	508×203.2×406.4	2790	2480	2670	2470	2150
21×8×15	533.4×203.2×381	3140	2795	3000	2780	2420
21×9×15	533.4×228.6×381	3620	3220	3460	3200	2890
22×12×16	558.8×304.8×406.4	5235	4660	5000	4630	4030
28×12×22	711×304.8×558.8	6120	5450	5900	5400	4725
28×14×22	711×355.6×558.8	7200	6430	6950	6370	5990
28×16×22	711×406.4×558.8	8250	7345	7930	7075	6805
36×9×30	914.4×228.6×762	5365	4630	5005	4290	4005
36×10×30	914.4×254×762	6570	5750	6170	5335	5150
36×12×30	914.4×304.8×762	7760	6925	7245	6420	6160
36×14×30	914.4×355.6×762	9125	7905	7995	6790	6670
40×12×30	1016×304.8×762	10320	9005	9130	7990	7790
40×14×30	1016×355.6×762	12650	11350	11550	10320	10060
40×16×30	1016×406.4×762	14820	13200	1380	12250	12100

