



HANMIX

AGR

AGRICULTURAL TIRE

Product parameter
manual

Tel: +86 532 80905566
Email: info@hanmix.net
Web: www.hanmix.net





WHY HANMIX?

HANMIX is an international brand with 40 years' experience in Tyre and Tyre Accessories business. HANMIX is not only a brand name, but a way for a better life. You can find security, safety and high quality life in the HANMIX World.

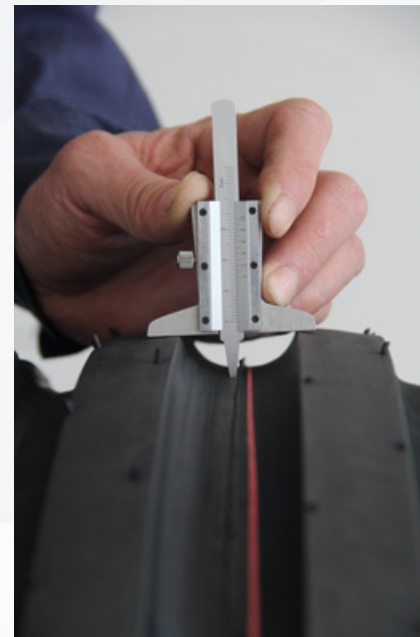
HANMIX THE QUALITY

HANMIX is committed to conducting comprehensive assessments of product quality, price, ability to supply our clients locally and internationally. All HANMIX products comply with international quality standards and are respected throughout the world.

-----WWW.HANMIX.NET

Quality Control:

HANMIX provides quality and quantity inspections, and offers a warranty for products purchased.



Inspected each tyre from production to the warehouse to the markets. Inspected each tyre by serial number, tread depth and weight. Inspected each tyre by international laboratory standards.

AGRICULTURAL TIRE

● R1/R2

● R3

● IRRIGATION

● PADDY

● I-1/I-3

● F1/F2/F3



RG-111



RG-333



RG-111-IR



RG-113



RG-114



RP-113



RP-114



RP-118



RP-119



RP-115



RP-115s



RP-116



R1/R2

Suitable for farms, logging areas and field.

RG-111

Features

- ◆ Universal tread pattern with excellent traction for a wide range of applications.
- ◆ Superior grip and self-cleaning capacity.
- ◆ Good aging and wearing resistance enhanced by special formula design.
- ◆ Long wear and durability from its braced lug design.
- ◆ Excellent roadability provided by the overlapping center lugs.

SIZE	TYPE	PR	STD RIM	MAX. LOAD (KG)	INFLATED PRESSURE (KPA)	TIRE DIMENSION (MM)	
						SW	OD
5.00-12	R1/R2	6	4.00E	320	210	145	590
5.50-17	R1/R2	6	1.00E	400	280	138	750
6.00-12	R1/R2	8	4.50E	450	300	165	640
6.00-14	R1/R2	8	4.50E	495	250	150	670
6.00-16	R1/R2	8	4.50E	550	300	165	745
6.50-16	R1/R2	8	5.00F	620	300	180	765
7.50-16	R1/R2	8	5.5F	730	260	205	810
7.50-20	R1/R2	8	5.5F	860	260	205	910
8.3-20	R1/R2	8	W7	785	300	210	895
8.3-24	R1/R2	8	W7	920	300	210	995

SIZE	TYPE	PR	STD RIM	MAX. LOAD (KG)	INFLATED PRESSURE (KPA)	TIRE DIMENSION (MM)	
						SW	OD
8.5-20	R1/R2	8	W7	780	250	195	875
9.5-16	R1/R2	6	W8	800	210	240	860
9.5-20	R1/R2	8	W8	955	280	240	950
9.5-24	R1/R2	8	W8	1110	280	240	1050
9.5-32	R1/R2	8	W8	1260	280	240	1250
11.2-20	R1/R2	8	W10	1085	240	285	1005
11.2-24	R1/R2	10	W10	1225	240	285	1105
11.2-28	R1/R2	10	W10	1305	240	285	1205
11.2-38	R1/R2	10	W10	1630	180	305	1540
11-32	R1/R2	10	W10	1080	160	305	1460
12.4-24	R1/R2	10	W11	1415	230	315	1160
12.4-28	R1/R2	10	W11	1510	230	315	1260
13.6/12-38	R1/R2	10	W11	1930	200	330	1575
13.6-24	R1/R2	10	W12	1545	210	345	1210
13.6-28	R1/R2	10	W12	1645	210	345	1310
14.9-24	R1/R2	10	W13	1990	230	378	1265
14.9-26	R1/R2	10	W13	2055	230	378	1315
14.9-28	R1/R2	10	W13	2120	230	378	1365
14.9-30	R1/R2	12	W13	2190	230	378	1415
15-24	R1/R2	10	DW14	2800	280	410	1330
15.5-38	R1/R2	10	W14	2320	230	395	1570
16.9-28	R1/R2	10	W15L	2380	200	430	1435
16.9-30	R1/R2	12	W15L	2730	240	430	1485
16.9-34	R1/R2	12	W15L	2820	230	430	1585
18.4-26	R1/R2	12	DW16	2985	230	467	1450
18.4-30	R1/R2	12	W16L	3180	230	467	1550
18.4-34	R1/R2	12	W16L	3375	230	467	1655
18.4-38	R1/R2	12	W16L	3575	230	467	1755
20.8-38	R1/R2	12	W18L	4450	240	528	1835
23.1-26	R1/R2	12	DW16	2985	230	467	1450



R1 IRRIGATION

RG-111-IR

Features

- ◆ Single Bar design with wide overlapping lugs.
- ◆ Deep Tread and excellent tread wear and durability.
- ◆ Designed to deliver power to the ground.
- ◆ Design offers maximum cleaning and side-hill slip resistance.

SIZE	TYPE	PR	STD RIM	MAX. LOAD (KG)	INFLATED PRESSURE (KPA)	TIRE DIMENSION (MM)	
						SW	OD
11.2-24	Irrigation	6	W10	950	180	285	1105
11.2-38	Irrigation	10	W10	1630	180	305	1540
13.6-24	Irrigation	10	W12	1545	210	345	1210
14.9-24	Irrigation	10	W13	1990	230	378	1265



R2 PADDY

RG-113

Features

- ◆ Extra-wide lugs with extensive overlap at the center, designed to resist buckling, tearing and cracking.
- ◆ Excellent tread wear and roadability, the laterally designed lugs result in even wear.

SIZE	TYPE	PR	STD RIM	MAX. LOAD (KG)	INFLATED PRESSURE (KPA)	TIRE DIMENSION (MM)	
						SW	OD
19.5L-24	Paddy	12	W17	240	180	495	1345
23.1-26	Paddy	12	DW20	170	180	587	1662
28L-26	Paddy	14	DW25	170	210	715	1615





R2 PADDY

RG-114

Features

- ◆ Excellent roadability provided by the overlapping center lugs.
- ◆ Traction in a wide range of sizes due to its long bar design.
- ◆ Long wear and durability from its braced lug design.
- ◆ Easy lug cleanability.

SIZE	TYPE	PR	STD RIM	MAX. LOAD (KG)	INFLATED PRESSURE (KPA)	TIRE DIMENSION (MM)	
						SW	OD
600-12	Paddy	6	5.00F	425	270	165	690
650-16	Paddy	10	5.00F	795	250	200	800
750-16	Paddy	10	5.50F	860	280	225	860
8.3-20	Paddy	10	W7	970	270	245	940
8.3-24	Paddy	8	W7	1135	270	210	1050
9.5-24	Paddy	10	W8	1100	280	285	1120
11.2-24	Paddy	8	W10	1465	210	310	1215
11-32	Paddy	10	W10	1080	160	305	1460
12.4-26	Paddy	8	W11	2010	260	315	1265
12.4-28	Paddy	12	W11	1900	220	350	1320
13.6-24	Paddy	10	W12	2220	360	345	1210

SIZE	TYPE	PR	STD RIM	MAX. LOAD (KG)	INFLATED PRESSURE (KPA)	TIRE DIMENSION (MM)	
						SW	OD
13.6-38	Paddy	10	W12	2780	250	345	1710
14.9-24	Paddy	10	W13	1760	180	378	1265
14.9-26	Paddy	10	W13	2040	230	378	1419
14.9-28	Paddy	10	W13	2120	230	378	1404
14.9-30	Paddy	10	W13	2190	230	398	1560
16.9-28	Paddy	12	W15L	2580	230	430	1478
16.9-30	Paddy	10	W15	2465	200	430	1585
16.9-34	Paddy	10	W15	3385	220	430	1670
18.4-30	Paddy	10	W16	2815	230	467	1550
18.4-38	Paddy	12	W16	3165	180	467	1755
20.8-38	Paddy	12	W18	4000	200	528	1887





R3

Ideal for golf courses, parks, citrus groves and highway mowing.

RG-333

Special tread compounds and powerful body structure design make it has excellent heat and wearing resistance.

Features

- ◆ Extremely strong traction, good self-cleaning and wide tread pattern provides good floating.
- ◆ Increased tread depth and strong carcass ensures long service life.
- ◆ Longer wearing, increased fuel efficiencies.
- ◆ Increased hillside stability.
- ◆ Diamond tread design for minimal soil disruption.
- ◆ High traction in loose, sandy soil provided by the large tread area.

SIZE	TYPE	PR	STD RIM	MAX. LOAD (KG)	INFLATED PRESSURE (KPA)	TIRE DIMENSION (MM)	
						SW	OD
23.1-26	R3	14	DW20	5600	230	595	1500
18.4-26	R3	12	DW16L	3350	250	467	1426



I-1/I-3

RP-113

Features

- ◆ Minimal ground disturbance, reduces soil compaction in the field.
- ◆ Flatter tread profile for improved load distribution.
- ◆ Great handling and towing characteristics.

SIZE	TYPE	PR	STD RIM	MAX. LOAD (KG)	INFLATED PRESSURE (KPA)	TIRE DIMENSION (MM)	
						SW	OD
600-16	I1/I3	6	4.00E		240	159	739
750-16	I1/I3	8	5.50F		280	203	808
760L-15	I1/I3	8	5.5	950	360	193	734
9.5L-14	I1/I3	8	7.00	1090	300	241	741
9.5L-15	I1/I3	8	8LB	1120	280	240	780
10-15	I1/I3	8	8LB	1425	240	276	855
11L-14	I1/I3	8	8LB	925	280	280	750
11L-15	I1/I3	8	8LB	1150	280	280	810
11L-16	I1/I3	8	8LB	1215	280	280	835
11L-16	I1/I3	12	8LB		360	280	835
12.5L-15	I1/I3	12	10.00	1750.0	360	318	823
205/75-15	I1/I3	8	7.00	1225	240	200	700
207/80-15	I1/I3	8	7.00	1050	240	230	730



I-1/I-3

RP-114

Features

- ◆ Round shoulders, radial construction, Large contact area.
- ◆ Highway appearing tread design, low rolling resistance.
- ◆ Very good stability, excellent protection against punctures.

SIZE	TYPE	PR	STD RIM	MAX. LOAD (KG)	INFLATED PRESSURE (KPA)	TIRE DIMENSION (MM)	
						SW	OD
7.00-12	I1/I3	12	5.00	1050	390	192	683
10.0/80-12	I1/I3	6	9.00	1060	230	264	710
10.0/80-12	I1/I3	8	9.00	1250	310	264	710
10.0/80-12	I1/I3	10	9.00	1440	390	264	710
10.0/75-15.3	I1/I3	6	9.00	1120	230	264	760
10.0/75-15.3	I1/I3	8	9.00	1360	310	264	760
10.0/75-15.3	I1/I3	10	9.00	1525	390	264	760
10.0/75-15.3	I1/I3	12	9.00	1700	470	264	760
10.0/75-15.3	I1/I3	14	9.00	1900	550	264	760
10.0/75-15.3	I1/I3	16	9.00	2180	660	264	760
10.0/75-15.3	I1/I3	18	9.00	2300	715	264	760
10.0/75-15.3	I1/I3	22	9.00	2900	950	264	760
10.5/65-16	I1/I3	14	9.00	1900	530	274	755

SIZE	TYPE	PR	STD RIM	MAX. LOAD (KG)	INFLATED PRESSURE (KPA)	TIRE DIMENSION (MM)	
						SW	OD
10.5/80-18	I1/I3	10	9.00	1950	370	274	885
11.5/80-15.3	I1/I3	8	9.00	1700	270	290	845
11.5/80-15.3	I1/I3	10	9.00	1950	340	290	845
11.5/80-15.3	I1/I3	12	9.00	2145	410	290	865
11.5/80-15.3	I1/I3	14	9.00	2430	475	290	845
11.5/80-15.3	I1/I3	16	9.00	2575	540	290	845
11.5/80-15.3	I1/I3	18	9.00	2725	610	290	845
12.5/80-15.3	I1/I3	14	9.00	2810	510	307	875
12.5/80-18	I1/I3	12	9.00	2650	370	308	965
13.0/65-18	I1/I3	16	11.00	2800	490	336	890





I-1/I-3

RP-118

Features

- ◆ New tread design for better wear and traction.
- ◆ Increased lug bracing for high load durability.
- ◆ Good grip and self-cleaning performance.

SIZE	TYPE	PR	STD RIM	MAX. LOAD (KG)	INFLATED PRESSURE (KPA)	TIRE DIMENSION (MM)	
						SW	OD
400/60-15.5TL	I1/I3	16	13.00	3725	380	400	875
500/45-22.5	I1/I3	16	16	3350	280	503	1022



I-1/I-3

RP-119

Features

- ◆ Ideal tires for modern farming, suitable for both on and off-the-road applications.
- ◆ Low section tires, offering high load capacity with minimum soil compaction & great transportation properties.
- ◆ Optimum tread arc delivers fullest possible footprint.

SIZE	TYPE	PR	STD RIM	MAX. LOAD (KG)	INFLATED PRESSURE (KPA)	TIRE DIMENSION (MM)	
						SW	OD
400/60-15.5TL	I1/I3	16	13.00	3725	380	400	875





F1/F2/F3

Suitable for all types of terrain, due to the strength of its carcass and the high resistance of its tread.

RP-115

Features

- ◆ The 3-rib pattern front tire provides excellent steering performance on loose and cultivated soil due to a wide and deep center rib.
- ◆ The strong casing along with the stubble-resistant compound ensure outstanding puncture resistance.
- ◆ Superior wear resistance thanks to the optimized load distribution on center and shoulder ribs.

SIZE	TYPE	PR	STD RIM	INFLATED PRESSURE (KPA)	TIRE DIMENSION (MM)	
					SW	OD
4.00-12	F1/F2/F3	6	3.00D	340	110	535
4.00-14	F1/F2/F3	6	3.00D	340	110	590
5.00-15	F1/F2/F3	6	3.00D	280	130	640
5.50-16	F1/F2/F3	6	4.00E	370	150	710
6.00-16	F1/F2/F3	8	4.00E	450	160	740
6.50-16	F1/F2/F3	8	4.50E	420	175	760
6.50-20	F1/F2/F3	8	5.00F	360	180	860
7.5L-15	F1/F2/F3	8	6LB	370	208	745
7.50-16	F1/F2/F3	8	5.50F	370	205	810
7.50-18	F1/F2/F3	8	5.50F	370	205	860

SIZE	TYPE	PR	STD RIM	INFLATED PRESSURE (KPA)	TIRE DIMENSION (MM)	
					SW	OD
7.50-20	F1/F2/F3	8	5.50F	370	205	910
9.00-16	F1/F2/F3	8	6.50H	400	210	880
9.5L-15	F1/F2/F3	8	8LB	310	240	780
11L-15	F1/F2/F3	8	8LB	340	280	810
10.00-16	F1/F2/F3	10	W8L	340	275	910
11.00-16	F1/F2/F3	10	W10L	310	315	970





F1/F2/F3

RP-115S

Features

- ◆ Excellent flotation and mobility from four-rib design.
- ◆ Excellent roadability.
- ◆ Features a nylon carcass, durable tread compound and bead rim shield.

SIZE	TYPE	PR	STD RIM	INFLATED PRESSURE (KPA)	TIRE DIMENSION (MM)	
					SW	OD
10.00-16	F1/F2/F3	10	W8L	340	275	910
11.00-16	F1/F2/F3	10	W10L	310	315	970



F1/F2/F3

RP-116

Features

- ◆ Penetrates deep into soil for maximum steering control and minimal lateral side-slip because of its high center rib.
- ◆ Used by original equipment manufacturers and offers excellent durability.

SIZE	TYPE	PR	STD RIM	MAX. LOAD (KG)	INFLATED PRESSURE (KPA)	TIRE DIMENSION (MM)	
						SW	OD
550-16	F1/F2/F3	10	4.00E	1350	530	110	670
600-16	F1/F2/F3	10	4.50E	850	530	120	680