



HANMIX

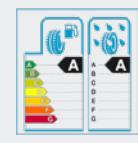
OTB

OFF-THE-ROAD BIAS TIRE

Product parameter
manual

Tel: +86 532 80905566
Email: info@hanmix.net
Web: www.hanmix.net





WHY HANMIX?

HANMIX is an international brand with 40 years' experience in Tyre and Tyre Accessories business. HANMIX is not only a brand name, but a way for a better life. You can find security, safety and high quality life in the HANMIX World.

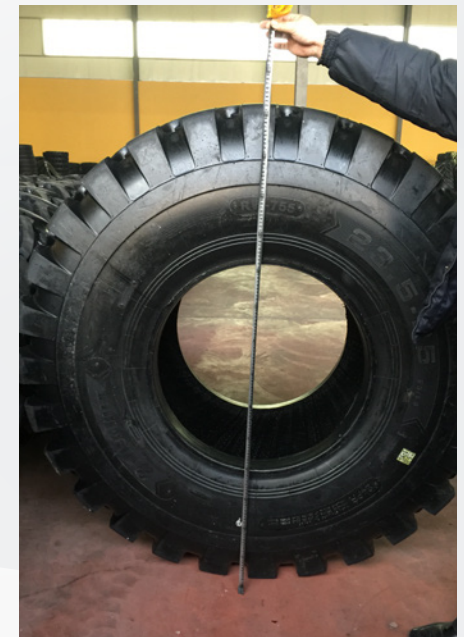
HANMIX THE QUALITY

HANMIX is committed to conducting comprehensive assessments of product quality, price, ability to supply our clients locally and internationally. All HANMIX products comply with international quality standards and are respected throughout the world.

-----WWW.HANMIX.NET

Quality Control:

HANMIX provides quality and quantity inspections, and offers a warranty for products purchased.



Inspected each tyre from production to the warehouse to the markets.
Inspected each tyre by serial number, tread depth and weight.
Inspected each tyre by international laboratory standards.



OFF-THE-ROAD BIAS TIRE

● G2

● E3/L3

● E4/L4

● L5/L5S

● IND



RW-G21



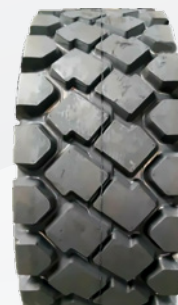
RW-G22



RW-G23



RW-733



RW-744



RW-755



RW-766



RW-777



RW-333



RW-444



RW-551



RW-552



RW-666



RW-711



G2

APPLICATION:
Scraper and motor grader in city and country maintenance work, construction and mine applications.

RW-G21

Features

- Pattern design producing excellent traction and self-cleaning features.
- A special compound enabling an extended tire life-cycle and heavy-duty service.

SIZE	PR	CODE	STD RIM	MAX. LOAD AND INFLATION PRESSURE (KG/KPA)		TIRE DIMENSION (MM)	
				50KM/H	10KM/H	SW	OD
13.00-24	12	G2/L2	8.00TG	2725/300	5600/450	333	1278
14.00-24	16	G2/L2	8.00TG	3650/350	7300/550	362	1348
15.5-25	12	G2/L2	12.00/1.3	3250/250	5600/400	395	1275
17.5-25	16	G2/L2	14.00/1.5	4250/300	7300/475	445	1350
20.5-25	16	G2/L2	17.00/2.0	4000/225	8250/350	521	1493
23.5-25	16	G2/L2	19.50/2.5	4750/200	9500/300	597	1617

Physical
Display



G2

APPLICATION:
Grader, loader, excavator and bulldozer work on soft muddy ground.

RW-G22

Features

- Open shoulder grooves providing excellent traction and self-cleaning Performance.
- Wide tread provides good buoyancy and has excellent driving performance in soft muddy road.

SIZE	PR	STD RIM	MAX. LOAD AND INFLATION PRESSURE (KG/KPA)		TIRE DIMENSION (MM)	
			50KM/H	10KM/H	SW	OD
13.00-24	12	8.00TG	2725/300	5600/450	333	1278
14.00-24	16	8.00TG	3650/350	7300/550	362	1348
15.5-25	12	12.00/1.3	3250/250	5600/400	395	1275
17.5-25	16	14.00/1.5	4250/300	7300/475	445	1350
20.5-25	16	17.00/2.0	4000/225	8250/350	521	1493
23.5-25	16	19.50/2.5	4750/200	9500/300	597	1617





G2

APPLICATION:

Scraper and motor grader in city and country maintenance work, construction and mine applications.

RW-G23

Features

- ▶ The strong, larger and more durable casing designed to extend life service and maximize equipment capacities.
- ▶ Pattern design producing excellent traction and self-cleaning features.

SIZE	PR	STD RIM	MAX. LOAD AND INFLATION PRESSURE (KG/KPA)		TIRE DIMENSION (MM)	
			50KM/H	10KM/H	SW	OD
13.00-24	12	8.00TG	2725/300	5600/450	333	1278
14.00-24	16	8.00TG	3650/350	7300/550	362	1348



E3/L3

APPLICATION:

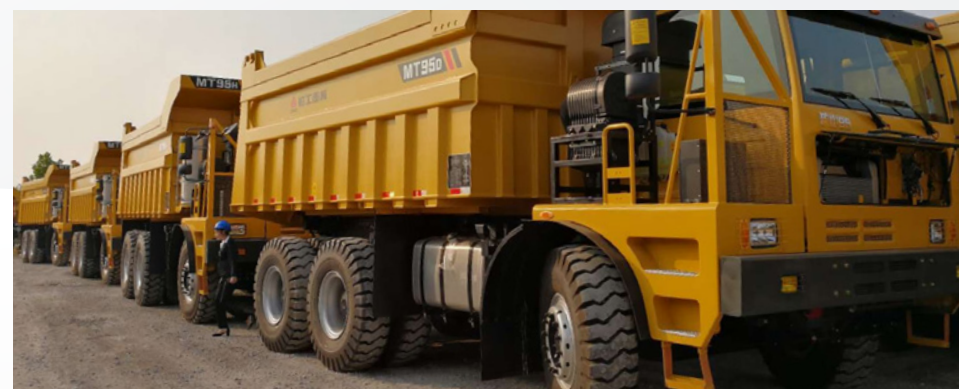
Heavy dump truck, loader and scraper working on bad road surface such as mining areas, quarry and tunnel sites.

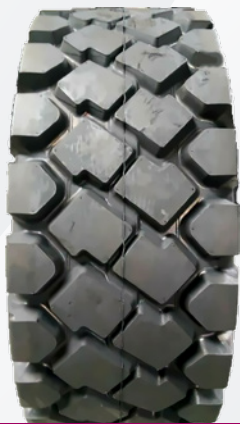
RW-733

Features

- ▶ Lug tread design with large blocks for outstanding traction.
- ▶ Enhanced casing for heavy mining trucks.
- ▶ Special formulated tread compound for cut and chip resistance.

SIZE	PR	STD RIM	MAX. LOAD AND INFLATION PRESSURE (KG/KPA)		TIRE DIMENSION (MM)	
			50KM/H	10KM/H	SW	OD
23.5-25	20	19.50/2.5	7300/300	10900/375	595	1615
23.5-25	24	19.50/2.5	8000/350	12500/475	595	1615





E3/L3

APPLICATION:

Loader, dozer, earthmover, grader and scraper operating under the relatively severe conditions.

RW-744

Features

- ▶ Particular wide transverse pattern design provides excellent multiple performance.
- ▶ Computer designed pattern suitable to off the road.
- ▶ Sturdy carcass provides maximum load ability.

SIZE	PR	STD RIM	MAX. LOAD AND INFLATION PRESSURE (KG/KPA)		TIRE DIMENSION (MM)	
			50KM/H	10KM/H	SW	OD
23.5-25	24	19.50/2.5	7100/300	10500/375	525	1585
23.5-25	28	19.50/2.5	7300/300	10900/375	525	1585



E3/L3

APPLICATION:

Loader, dozer, earthmover, grader and scraper operating under the relatively severe conditions.

RW-755

Features

- ▶ Sturdy and durable carcass provides high load capacity.
- ▶ Wide and big pattern blocks in the middle provide relatively strong wear resistance and concussion burst resistance.
- ▶ Good mud disposal, side-skidding resistance and self-cleaning.

SIZE	PR	STD RIM	MAX. LOAD AND INFLATION PRESSURE (KG/KPA)		TIRE DIMENSION (MM)	
			50KM/H	10KM/H	SW	OD
15.5-25	16	12.00/1.3	3850/325	6750/525	395	1275
17.5-25	16	14.00/1.5	4250/300	7300/475	445	1350
17.5-25	20	14.00/1.5	5000/400	8250/575	445	1350
17.5-25	24	14.00/1.5	5600/475	9250/700	445	1350
18.00-25	32	13.00/2.5	8750/575	15000/750	500	1615
20.5-25	16	17.00/2.0	5450/275	8250/350	520	1490
20.5-25	20	17.00/2.0	6000/325	9500/450	520	1490
20.5-25	24	17.00/2.0	6700/400	10300/525	520	1490
23.5-25	20	19.50/2.5	7300/300	10900/375	595	1615
23.5-25	24	19.50/2.5	8000/350	12500/475	595	1615
23.5-25	28	19.50/2.5	8750/400	13600/550	595	1615
26.5-25	24	22.00/3.0	9250/300	14000/400	675	1750
26.5-25	28	22.00/3.0	10000/350	15500/475	675	1750
26.5-25	32	22.00/3.0	11200/425	17000/550	675	1750
29.5-25	28	25.00/3.5	11500/325	17500/425	750	1875
29.5-25	32	25.00/3.5	12950/400	20000/525	750	1875



E3/L3

APPLICATION:
Loader, dozer, earthmover, grader and scraper.

RW-766

SIZE	PR	STD RIM	MAX. LOAD (KG)	INFLATION PRESSURE (KPA)	TIRE DIMENSION (MM)	
					SW	OD
825-16	12	6.50H	650	210	235	855
20.5/70-16	16	8.50H	2850	350	410	1075



E3/L3

APPLICATION:
Loader, dozer, earthmover, grader and scraper operating under severe conditions.

RW-777

Features

- The tread compound providing cut and chip resistant properties and suits best for loading and dozing operations.
- Aggressive durable lug design, non-directional tread design and wide base construction provide high flotation, excellent traction, improved stability and reduced ground pressure.
- The specially formulated synthetic rubber compound can offer excellent cutting and heat resistance and help to prevent sidewall cracking.

SIZE	PR	STD RIM	MAX. LOAD AND INFLATION PRESSURE (KG/KPA)		TIRE DIMENSION (MM)	
			50KM/H	10KM/H	SW	OD
7.50-16	10	6.00G		860/530	215	805
9.00-16	14	6.50H		1120/260	255	890
1200-16	16	6.50H	1705/680		240	840
16/70-20	16	13.00	3350/350	5600/450	410	1075
16/70-24	16	13.00	3350/350	5600/450	410	1175
13.00-24	12	10.00	3000/300	5600/450	350	1350
14.00-24	16	10.00	4000/375	7300/550	375	1370
14.00-24	20	10.00	4625/475	8500/700	375	1370
14.00-24	24	10.00	5150/575	9500/850	375	1370
14.00-24	28	10.00	5600/650	10000/925	375	1370
14.00-25	24	10.00/1.5	5150/575	9500/850	375	1370



SIZE	PR	STD RIM	MAX. LOAD AND INFLATION PRESSURE (KG/KPA)		TIRE DIMENSION (MM)	
			50KM/H	10KM/H	SW	OD
14.00-25	28	10.00/1.5	5600/650	10000/925	375	1370
14.00-25	32	10.00/1.5	6150/750	10900/1050	375	1370
15.5-25	16	12.00/1.3	3850/325	6750/525	395	1275
16.00-24	24	11.25/2.0	6000/475	10600/650	430	1495
16.00-24	28	11.25/2.0	6700/575	11500/750	430	1495
16.00-24	32	11.25/2.0	7300/650	12500/875	430	1495
16.00-25	28	11.25/2.0	6700/575	11500/750	430	1495
16.00-25	32	11.25/2.0	7300/650	12500/875	430	1495
17.5-25	16	14.00/1.5	4250/300	7300/475	445	1350
17.5-25	20	14.00/1.5	5000/400	8250/575	445	1350
17.5-25	24	14.00/1.5	5600/475	9250/700	445	1350
18.00-24	32	13.00/2.5	8750/575	15000/750	500	1615
18.00-24	36	13.00/2.5	9250/625	16000/850	500	1615
18.00-25	32	13.00/2.5	8750/575	15000/750	500	1615
18.00-25	36	13.00/2.5	9250/625	16000/850	500	1615
20.5-25	16	17.00/2.0	5450/275	8250/350	520	1490
20.5-25	20	17.00/2.0	6000/325	9500/450	520	1490
20.5-25	24	17.00/2.0	6700/400	10300/525	520	1490
23.5-25	20	19.50/2.5	7300/300	10900/375	595	1615
23.5-25	24	19.50/2.5	8000/350	12500/475	595	1615
23.5-25	28	19.50/2.5	8750/400	13600/550	595	1615
26.5-25	24	22.00/3.0	9250/300	14000/400	675	1750
26.5-25	28	22.00/3.0	10000/350	15500/475	675	1750
26.5-25	32	22.00/3.0	11200/425	17000/550	675	1750



E4/L4

APPLICATION:

Heavy dump truck, loader and scraper working on bad road surface such as mining areas, quarry and tunnel sites.

RW-333

Features

- Deep tread pattern and wide riding area provide good cutting and wear resistances and can load more. It improves the whole performance of the tyre and tyre service life.
- Special compound and design extending the tire service life.

SIZE	PR	STD RIM	MAX. LOAD AND INFLATION PRESSURE (KG/KPA)		TIRE DIMENSION (MM)	
			50KM/H	10KM/H	SW	OD
18.00-25	36	13.00/2.5	9250/625	16000/850	495	1615
18.00-33	36	13.00/2.5	10600/625	18500/850	495	1820
21.00-35	36	15.00/3.0	10600/625	18500/850	572	2052
24.00-35	42	17.00/3.5	16500/550	29000/750	650	2170





L4

APPLICATION:
Loader and dozer in quarry and harsh pavement.

RW-444

Features

- ▶ Non-directional design for heavy duty rock service.
- ▶ Ideal tire for severe operations requiring added cut resistance, sidewall protection and exceptional traction, excellent tread cleaning design.

SIZE	PR	STD RIM	MAX. LOAD AND INFLATION PRESSURE (KG/KPA)		TIRE DIMENSION (MM)	
			50KM/H	10KM/H	SW	OD
17.5-25	16	14.00/1.5	4250/300	7300/475	445	1400



L5/L5S

APPLICATION:
Underground load-haul-dump (LHD), shuttle car in rocky harsh conditions in pit lane, tunnel and underground mines.

RW-551

Features

- ▶ Extra deep tread depth offering long tread life in extreme conditions.
- ▶ Special cut resistance compound provides optimum cutting and wear resistance.
- ▶ Smooth or slick tread design providing the maximum rock type damage resistance.

SIZE	PR	STD RIM	MAX. LOAD AND INFLATION PRESSURE (KG/KPA)		TIRE DIMENSION (MM)	
			50KM/H	10KM/H	SW	OD
12.00-24	20	8.50	3750/550	6900/825	315	1275
17.5-25	20	14.00/1.5	5000/400	8250/575	445	1440
18.00-25	36	13.00/2.5	8750/575	15000/750	498	1673
26.5-25	32	22.00/3.0	10000/350	15500/475	673	1798
29.5-25	40	25.00/3.5	16000/400	20000/525	749	1921
29.5-29	40	25.00/3.5	15000/475	23600/625	749	2023



L5/L5S

APPLICATION:
Giant loader and earthmover in the ore and coal mine sites.

RW-552

Features

- ▶ Extra deep tread provides excellent rock type damage resistance and long tread life.
- ▶ Open non-directional tread pattern provides all round traction with excellent self-cleaning.
- ▶ Features Aralon Cut Resistant Breaker (CRB) construction, which provides increased strength and durability.

SIZE	PR	STD RIM	MAX. LOAD AND INFLATION PRESSURE (KG/KPA)		TIRE DIMENSION (MM)	
			50KM/H	10KM/H	SW	OD
20.5-25	28	17.00/2.0	7500/475	11500/625	521	1548
23.5-25	28	19.50/2.5	8750/400	13600/550	597	1673
26.5-25	32	22.00/3.0	12000/425	17000/550	673	1798
29.5-25	34	25.00/3.5	13000/350	20000/525	749	1921
35/65-33	36	28.00/3.5	/	23600/525	890	2030



IND

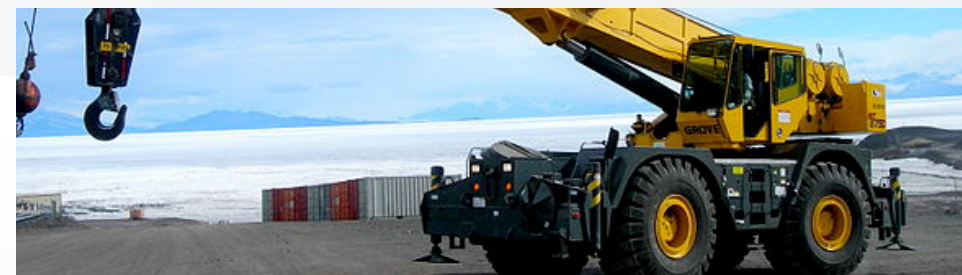
APPLICATION:
Terminal and port crane and heavy crane series.

RW-666

Features

- ▶ Good sealing performance, strong driving force, firm carcass.
- ▶ Good puncture resistance and smooth running performance.
- ▶ Deep tread, the extra thick sidewall and the tough casing providing exceptional durability minimizing the risk of punctures and accidenta damages.

SIZE	PR	STD RIM	TYPE	T.D. (MM)	MAX LOAD (KG)	INFLATION PRESSURE (KPA)	TIRE DIMENSION (MM)	
							SW	OD
11.00-20	18	8	TT	40	40	1200	1200	1097
12.00-20	24	8.5	TT	45	45	1000	1000	1143
14.00-24	32	10	TT	40	40	1200	1200	1370
14.00-25	40	10.00/2.0	TT	40	40	1200	1200	1370





IND

APPLICATION:
Excavators and loaders operating on soft
and muddy ground.

RW-711

Features

- ▶ Extremely strong traction and self-clearing ability.
- ▶ Wide tread pattern provide good floating and excellent drive performance on muddy road surface.
- ▶ The strong casing providing extraordinary resistance to impacts and shocks even in heavy-duty operations.

SIZE	PR	STD RIM	MAX. LOAD (KG)	INFLATION PRESSURE (KPA)	TIRE DIMENSION (MM)	
					SW	OD
9.00-20	14	7.0	5195	760	259	1038
10.00-20	16	7.5	6085	790	278	1073

